

Marine Radio Control

Creative Services Software

Table of Contents

Welcome to Marine Radio Control	1
Setting up Radio Control	2
How to change the Remote Control Input Terminal on your Radio	3
Radio Setup	4
Using Radio Control	5
Demo Mode	7
Technical Support	8
Known Bugs	9

Welcome to Marine Radio Control

Welcome to Creative Services Software's Marine Radio Control. This program allows basic radio control features such as tuning, changing bands, changing modes, and a signal strength meter. Current versions of this software support the ICOM radios only. Current radios that are supported include the IC M700Pro, IC M710, and the IC M710RT.

Setting up Radio Control

Before you begin setting up Radio Control to work with your radio, you will need a few things.

1. The Radio Control cable that you should have received with the software.
2. Two 3.5 inch floppy disks (or a single CD) containing this program.
3. A compatible radio (IC M700Pro, IC M710, or IC M710RT).
4. A 1/8-inch Stereo to Mono Adapter (this should have come with your cable and program).

Now you need to attach the Stereo to Mono Adapter to the Stereo end of your cloning cable and plug that into the 1/8-inch clone jack in the back of your radio. For more information on the location of the clone jack, consult your radio's manual. Then you will need to plug the RS-232 Interface into an open serial port.

Once you have the cloning cable setup you will have to go into your radio settings and change the remote control input terminal to the clone jack. For information on how to change the remote control input jack see the Help topic or consult your radio's manual.

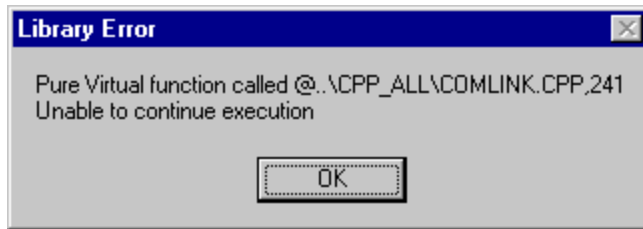
The first time you load the radio control program you should see a screen telling you that you need to configure it for your computer and radio. The screen should look like this.



Once you see this window just click on the 'OK' button to proceed to the next screen. The next screen will be the Settings screen. If you ever have to change a setting this is where you will do so.

How to change the Remote Control Input Terminal on your Radio

1. Push [POWER] to turn power off.
2. While pushing [ENT] + [1] on the IC-M700PRO and [FUNC] + [1] on the IC-M710, push [POWER] to turn power on and enter set mode.
3. Rotate the [GROUP] selector to select the 'REM-IF' item.
4. Rotate the [CHANNEL] selector to the 'PIN' item. If you incorrectly select the 'd-Sub' item, you will get the following error message:



5. Turn power off and on again to exit set mode.

Radio Setup

Radio Setup

COM port: 1 Baud: 4800

Radio Brand: ICOM

Radio Type: NMEA

Radio Address: 2

Serial Number: RM17365000157137714

OK Cancel Demo Mode

Suggested Settings
Radio: ICOM
Baud: 4800
Address: 2

Default NMEA Addresses
M700: 2
M710: 1
M700-RT: 3

The first thing to do is to select the COM port that the RS-232 Interface for your radio is connected to. For most people it will be either COM 1 or COM 2 since these are usually the 2 external serial ports on a computer.

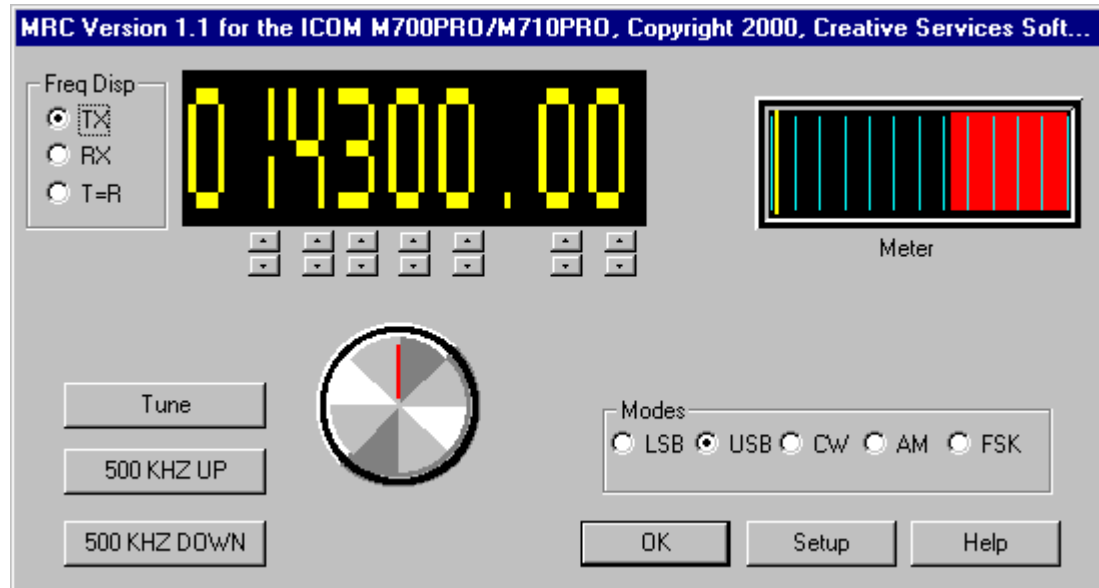
The second thing you will need to do is select the Baud rate of the serial port the radio is on. This should be set to 4800 for all radios.

Then you need to set the Radio Address. Choose the Default NMEA Address for the radio that you have.

The Serial Number will be given to you at the time of purchase.

Using Radio Control

Now that you've got the Radio Control set up you can have lots of fun without being limited to the frequencies pre-set in your radio. You should see this screen when you run Radio Control.



Starting off at the top of the window you should see a large digital display. This is the frequency to which the radio is set. If you look at your radio when this window pops up you should see it is set to this frequency. On your radio's display you should also see the word 'REMOTE' below the frequency read-out.

There are several ways to tune the radio. For general tuning you can use the knob with the red line to tune quickly to a different frequency. This lets you tune faster but it is harder to fine tune to a specific frequency. Once you get to the general area that you want, simply use the up and down arrows found below the frequency display.

To the left of the frequency display you can set both the Transmit frequency and the Receive frequency. Because you are in Duplex mode, you are required to set both of these. **Caution: before transmitting, make certain your TX frequency is set correctly.** You can choose T=R to transmit in Simplex mode.

If you're interested in changing bands then you can click the '500 kHz UP' or the '500 kHz DOWN' button to raise or lower the frequency by 500 kHz.

The Modes simply let you change the radio between Lower Side Band (LSB, if supported by your radio), Upper Side Band (USB), CW, AM, or FSK. If your radio supports the LSB function and it is not enabled, it may be necessary to have your marine dealer enable it.

The TUNE button sets your antenna tuner.

6 / Marine Radio Control

The Meter reads relative signal strength.

NOTE: NOT ALL RADIOS WILL SUPPORT ALL OF THESE FUNCTIONS. FOR MORE INFORMATION ON YOUR RADIO'S FUNCTIONS PLEASE CONSULT YOUR RADIO'S MANUAL.

When you're done using the radio control simply press the 'OK' button at the bottom of the window to close it. To change the settings for the Radio Control (i.e. baud rate or COM port) click on the setup button. This will take you back to the same setup screen you saw when you first setup the radio control feature. For more information on setting up Radio Control or changing the settings please see the Radio Setup section of this help file.

Demo Mode

Marine Radio Control can be used in Demo Mode before purchasing. Using Marine Radio Control in Demo Mode allows you to change the Transmit and Receive Frequencies. The Signal Strength Meter is also available. When you purchase Marine Radio Control you will be able to use all of the other features.

Technical Support

If you need technical support, you have the following options.

Email – support@cssincorp.com

Phone - (256) 381-6135

Newsgroups - <news://news.cssincorp.com/icom.product.support.radiocontrol.marine>

Known Bugs

- If you tune too rapidly, the radio display will not be the same as the frequency display. Clicking one more time will resolve this problem.
- When changing from Duplex to Simplex, it is necessary to manually reset transmit/receive frequencies for Simplex operation.
- When installing Marine Radio Control with PacTerm '98 version 1.4, be sure to install Marine Radio Control last to ensure the correct files are installed.