

WeFax for Windows
AEA and Timewave TNCs
Version 2.0

Creative Services Software, Inc.
<http://www.cssincorp.com/>

Creative Services Software, Inc.
503 West State Street, Suite 4
Muscle Shoals, AL 35661
USA

Phone: 256-381-6100
Fax: 256-381-6121

Contents

Welcome to WeFax for Windows	1
WeFax for Windows	1
Introduction to WeFax for Windows	1
Installation of WeFax for Windows	1
Starting WeFax for Windows	2
The WeFax Window	4
Demo Mode	5
What is a WeFax	6
Tuning the Radio	6
Tech Support	8
WeFax for Windows Menus	9
File Menu	9
File Menu Options	9
New	9
Open	10
Save	10
Print	10
Settings	11
Communication Settings	11
WeFax Settings	12
Option Settings	13
Send	14
Exit	14
Edit Menu	14
Edit Menu Options	14
Undo	15
Cut	15
Copy	15
Paste	16
View Menu	16
View Menu Options	16
Toolbar	16
Status Bar	18
Return to Terminal Mode on Exit	18
Tools Menu	19
Tools Menu Options	19
Fax Scheduler	19
Image Viewer	21
Transmit from File	22
Transmit Screen File Menu	23
Transmit Screen View Menu	24
Transmit Screen Help Menu	24
Transmit Toolbar	24

WeFax Menu	25
WeFax Menu Options	25
Start WeFax	25
Pause WeFax	25
Sync	26
Lines to Skip	26
Color Menu	27
Color Menu Options	27
Background Color	27
Foreground Color	28
Invert Colors	29
Help Menu	29
Help Menu Options	29
Help Topics	30
Ordering Information	30
Registration	30
About WeFax for Windows	31
Index	34

Welcome to WeFax for Windows

WeFax for Windows

Welcome to WeFax for Windows, the industry's benchmark in Weather Facsimile download software. WeFax for Windows is a stand-alone application operating on the Windows 95, Windows 98, Windows ME, Windows NT, Windows 2000, and Windows XP operating platforms. Its purpose is to receive weather maps, transmitted by various shore stations around the world, and pass them on to you. WeFax for Windows is the only weather fax program on the market that supports the Windows operating systems discussed above. It is due to this fact that you will find WeFax for Windows graphically oriented and easy to use. Creative Services Software would once again like to thank you for your purchase.

Introduction to WeFax for Windows

Installation of WeFax for Windows

Starting WeFax for Windows

Technical Support

Introduction to WeFax for Windows

WeFax for Windows requires several pieces of equipment for effective operation:

- 1) At least a short wave receiver capable of receiving Single Side Band (SSB) transmissions. The better you select the radio, the better the quality of the received transmission will be.
- 2) A personal computer capable of supporting Windows 95, Windows 98, Windows ME, Windows NT, Windows 2000, or Windows XP
- 3) Any Timewave TNC which supports WeFax Mode including (but not limited to the PK-900, PK-232DSP, PK-232MBX).


Installation of WeFax for Windows

If you received a CD:

2 - WeFax for Windows

- 1) Insert the CD into your CD drive, and wait for the AutoRun program to start.
- 2) Follow the instructions on the screen to install WeFax for Windows.

If you received diskettes:

- 1) Insert Disk one of your WeFax for Windows installation set into your 3.5" disk drive.
- 2) Once you have completed step one, click on the Start button.  This button is typically located in the bottom left hand corner of your screen.
- 3) Select the Run option from the Start menu, then type: '**A:\ setup.exe**' in the area of the Run box labeled **Open**: after this step is completed click the OK button displayed in the bottom of the Run box.



- 4) The computer will begin the installation procedure after completion of Step Three. Follow any instructions the computer gives you in order to complete the installation process.

Starting WeFax for Windows

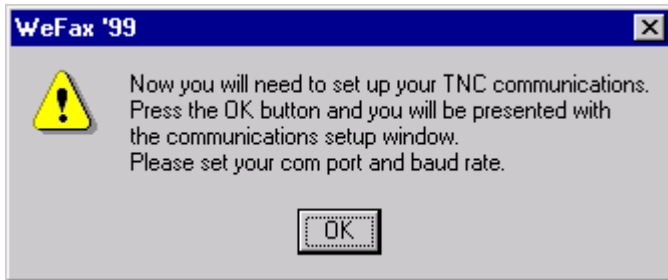
After you have run the installation program, you are ready to start using WeFax for Windows. There are two easy ways to start WeFax for Windows:

- 1) The first way to start WeFax for Windows is to double click on the WeFax for Windows icon you chose to locate on your desktop during installation. This is what the icon looks like.



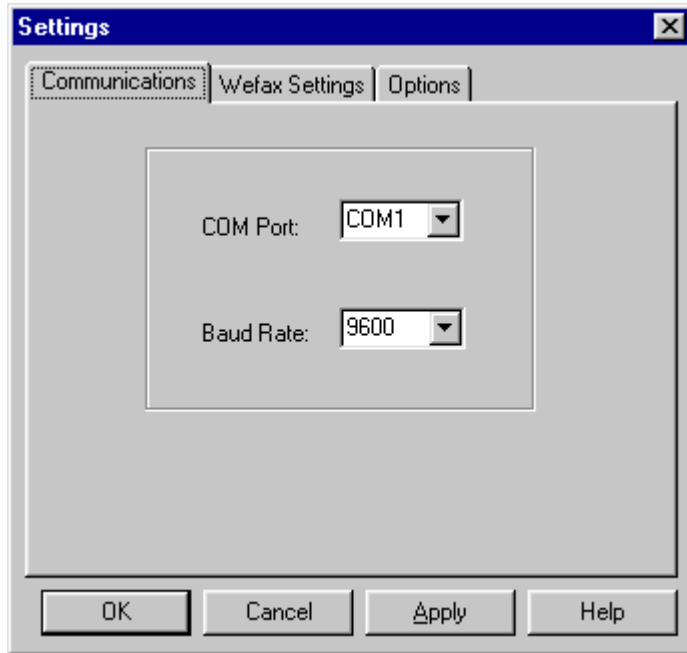
- 2) The second way to start WeFax for Windows is to click on the **Start** button. Following this go to **Programs**. Then go to the **Timewave** folder and then the **WeFax for Windows** folder the click on WeFax for Windows.

The first time you start WeFax for Windows, you will receive the text box below, informing you that you need to setup your TNC settings.



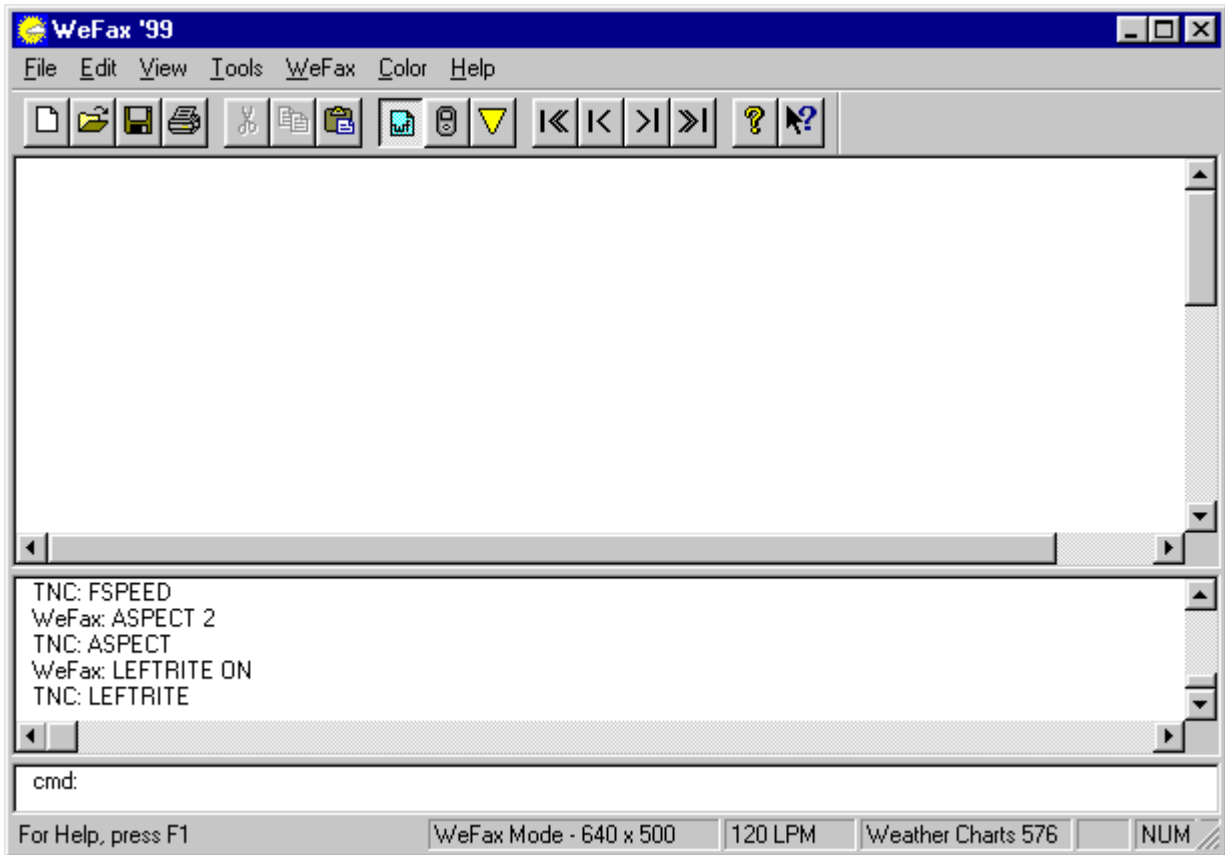
After clicking the **OK** button in the box above the communications setup window appears. This window allows you to modify your current communications settings. You will need to set the COM port where the TNC is connected and the baud rate that is set in the TNC. If you are not sure of the baud rate for your TNC, type **TBaud** in HyperTerminal before opening WeFax for Windows.

The **Apply** button saves your settings and keeps the Settings window open. The **OK** button saves your settings and closes the Settings window. The **Cancel** button cancels any changes you have made and closes the Settings window. The **Help** button brings up the Help topic for this window.



The WeFax Window

After starting WeFax for Windows the following screen should have appeared in your monitor:

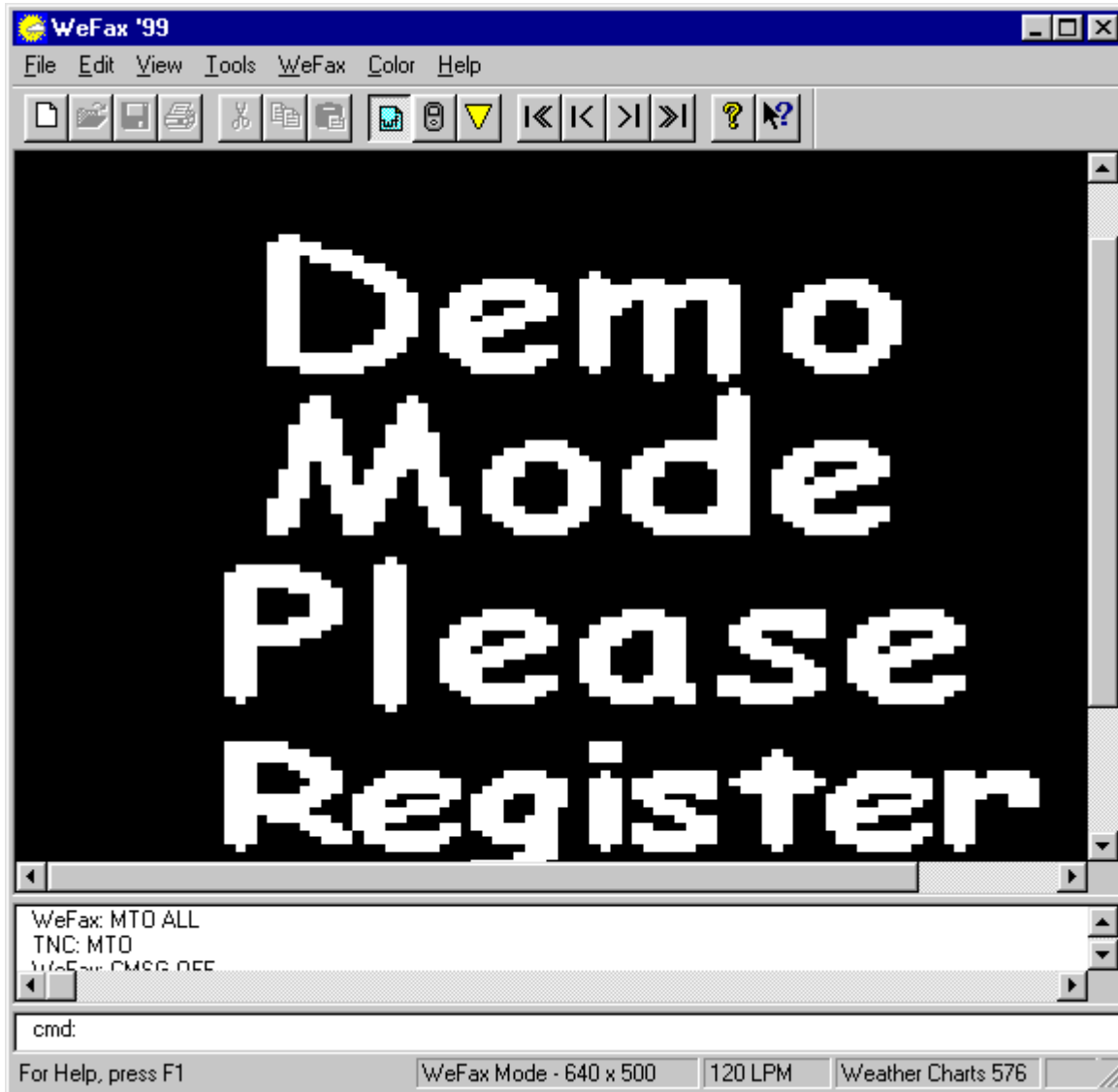


This is the main screen that you will use to receive WeFax pictures. You can note the Toolbar near the top of the screen, which gives you easy access to most of the WeFax for Windows functions with buttons. See the Toolbar section for more information.

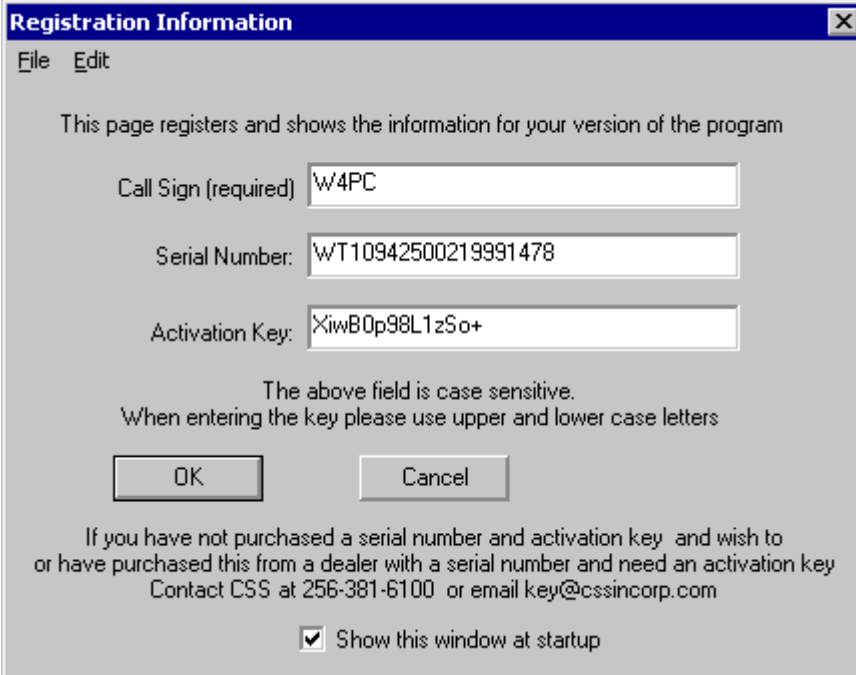
Also at the top of the screen are the menu items. You can access everything in WeFax for Windows through the menus.

Demo Mode

Demo Mode is a trial version of WeFax for Windows, which allows you to try WeFax for Windows before you purchase it. Some functionality has been taken out of Demo Mode. You will not be able to change the background and foreground colors. The ability to cut, copy and paste text has been taken out in the unregistered version. Also you will not be able to print or save the bitmap after you have received it. Lastly, a box of text asking you to register your software will appear over the incoming WeFax. A picture of what you can expect is shown here.



Once you have purchased a serial number to activate all the features of WeFax for Windows, simply click on the Help menu and then choose Registration. You will then see this screen.



The image shows a 'Registration Information' dialog box with a blue title bar and a close button. It contains a menu bar with 'File' and 'Edit'. The main text reads: 'This page registers and shows the information for your version of the program'. Below this are three input fields: 'Call Sign (required)' with 'W4PC', 'Serial Number:' with 'WT10942500219991478', and 'Activation Key:' with 'XiwB0p98L1zSo+'. A note states: 'The above field is case sensitive. When entering the key please use upper and lower case letters'. At the bottom are 'OK' and 'Cancel' buttons, and a checkbox labeled 'Show this window at startup' which is checked. A footer note provides contact information for CSS: 'If you have not purchased a serial number and activation key and wish to or have purchased this from a dealer with a serial number and need an activation key Contact CSS at 256-381-6100 or email key@cssincorp.com'.


Simply type in the serial number and then click **OK**. You will then be able to enjoy WeFax for Windows with all its functionality.

What is a WeFax

A WeFax is a map that contains a summary of weather conditions, showing such things as atmospheric pressure and surface temperatures over wide areas. Many of these maps show whole continents or oceans. The HF stations that transmit them often produce these maps, but occasionally a HF station will receive satellite pictures and will transmit them over the HF bands.

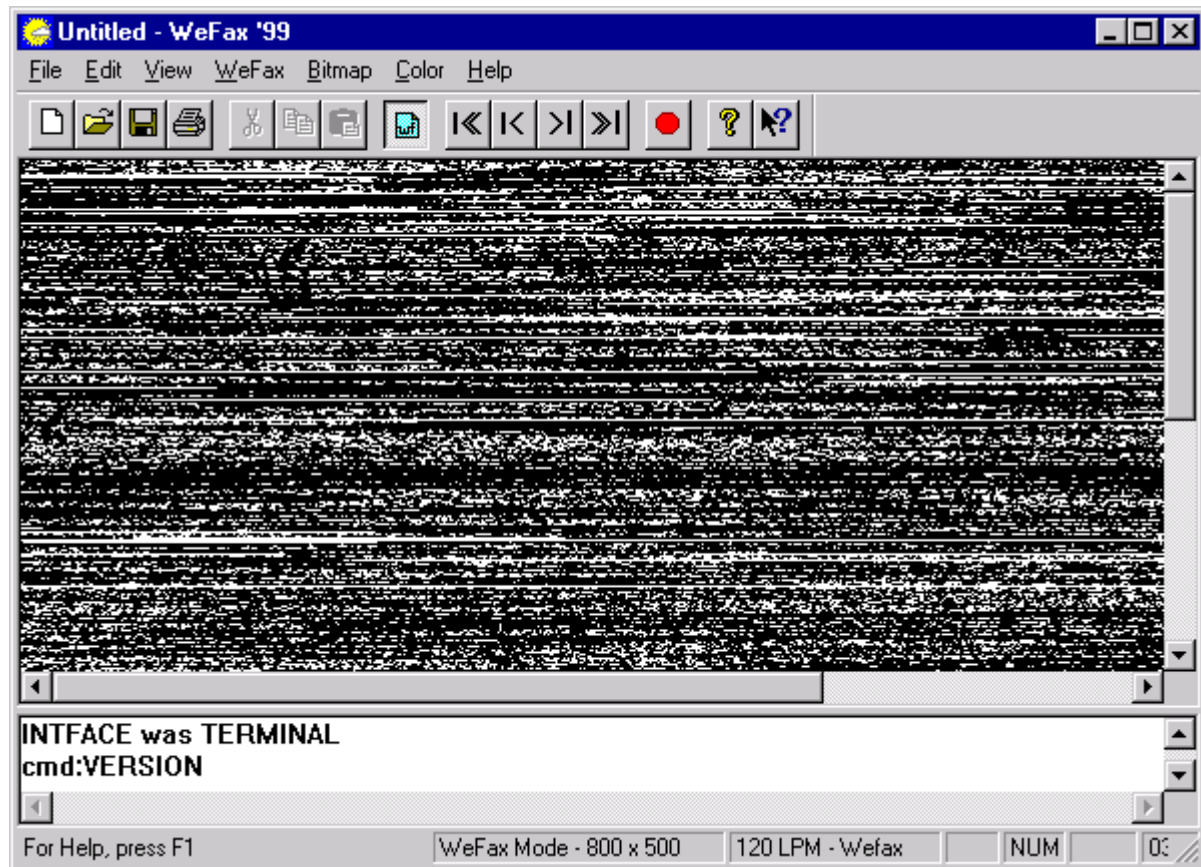
Tuning the Radio

To effectively utilize the WeFax facsimile capabilities simply tune your radio to a Weather Fax

transmitting station and then click on the WeFax toolbar button . Once you have enabled the WeFax mode all you have to do is wait for the map to appear on your screen. There are over 50 Weather Fax transmitting stations around the world. Some of these stations are on a consistent transmission schedule and others broadcast irregularly.

The first thing you need to do is tune to a WeFax station The WeFax Signal sounds like a RTTY signal so if you can tune those you shouldn't have too big of a problem. To start with, tune to the frequency as best you can. If you see more black than white on the incoming picture then you have tuned to high. If you see more White than black then you have tuned too low. Adjust accordingly until you reach an acceptable picture quality.

Here is an example of a WeFax picture from a poorly tuned or weak signal. This picture is an extreme but it will give you a general idea of what you don't want.



Tech Support

If you need more information on Windows, please consult Windows Help.

For telephone support call (256) 381-6135.

For Support by email write support@cssincorp.com.

You can also check our web site for information. Our web site is <http://www.cssincorp.com>.

Email problems with WeFax for Windows documentation to docmaster@cssincorp.com.

If you need more information on your TNC, please consult your TNC Owners Manual.

WeFax for Windows Menus

File Menu

File Menu Options




The **File** menu allows you to start a New WeFax session, Open a saved Wefax image, Save a WeFax image, Print a WeFax image, change your Settings, Send a WeFax image by email, or Exit WeFax.

New

The **New** command opens up a blank bitmap to receive a WeFax. The size of this new bitmap is determined by the resolution set in the Settings screen. See WeFax Settings for more information.

To open a new bitmap click on the **File** menu and then choose **New**.

Shortcuts


Toolbar button: 

Open

The **Open** command allows you to open an existing bitmap in your default bitmap viewer (for most Windows users this will be Microsoft Paint).

To open an existing bitmap click on the **File** menu and then choose **Open**.

Shortcuts


Toolbar button: 

Save

The **Save** command allows you to save a WeFAX once you are finished receiving it. It is best to pause or stop the transmission before you save it so that no new data will be coming onto the screen while you are saving.

To save a bitmap, click on the **File** menu and then choose **Save**.

Shortcuts

Toolbar button: 

The **Save As** command is the same as save but it asks you to put in a name for the bitmap every time you click it and does not save over the existing bitmap of that name automatically.


To use the **Save As** command click on the **File** menu and then choose **Save As**. There is no button on the toolbar for Save As.

Print

The **Print** command allows the user to print the bitmap that is in the WeFAX window of WeFAX for Windows.

To print the bitmap click on the **File** menu and then choose **Print**.

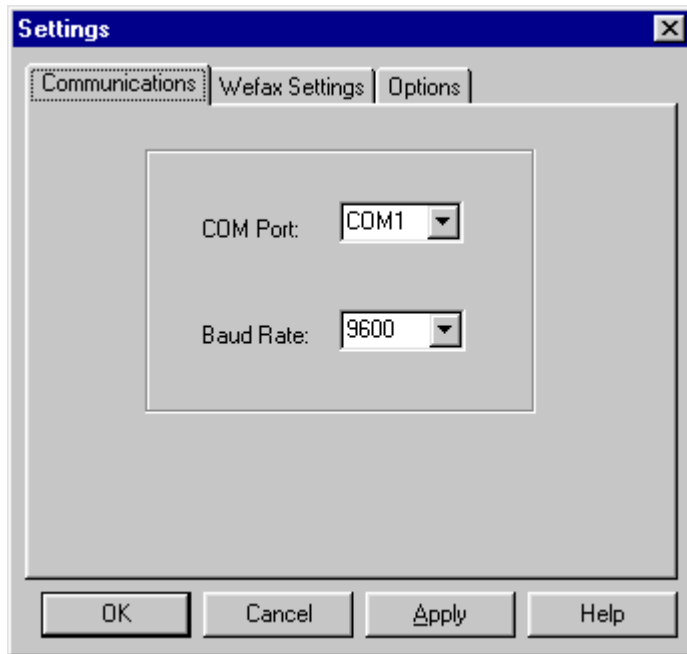
Shortcuts

Toolbar button: 

Settings

The Settings option allows you to change your Communications settings, your WeFax image settings, and the program Option settings.

Communication Settings

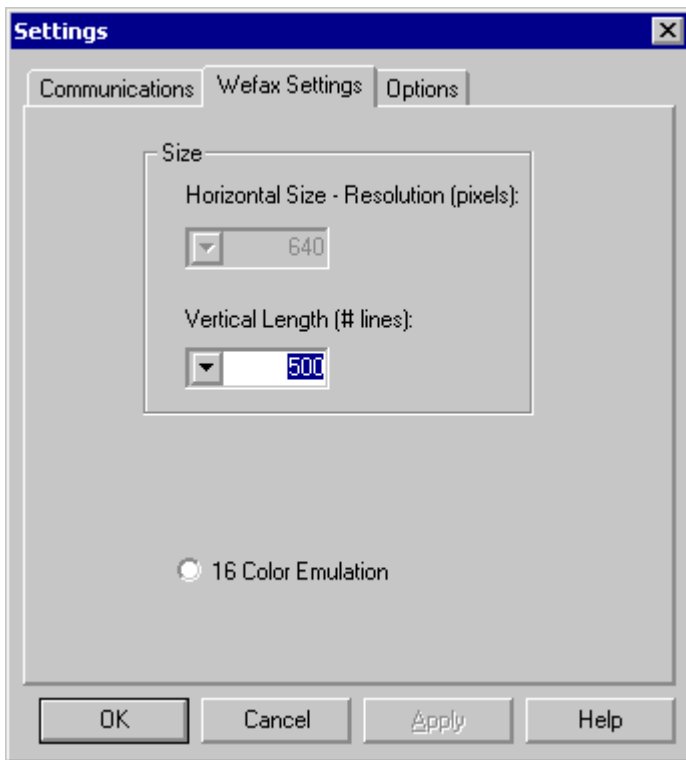


The Communications Settings allow you to change the Communications port that the TNC is connected to on the computer. It also allows you to change the Baud Rate.

The baud rate tells WeFax for Windows the baud rate of your TNC. To change the baud rate on your TNC you must use the 'TBaud' command and then change the baud rate for WeFax for Windows to match the new baud rate.

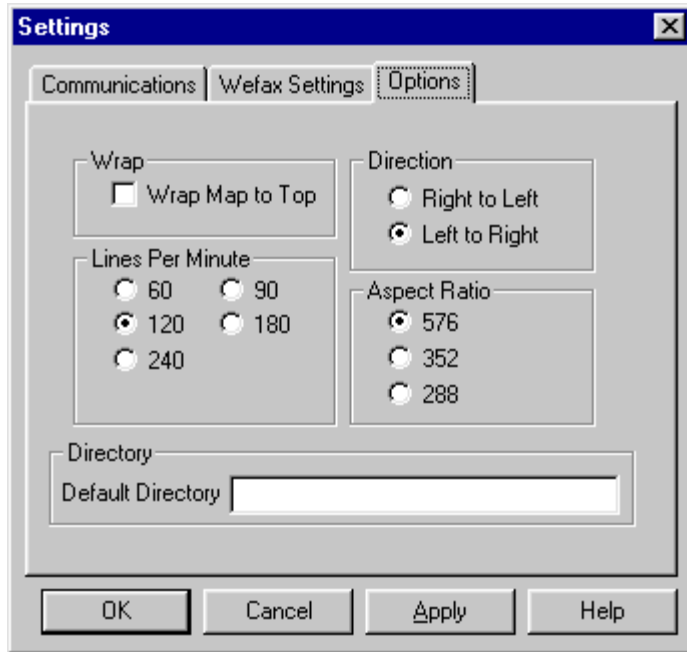
WARNING: WeFax for Windows may not start properly if the baud rate of the TNC does not match the baud rate in the Communications Settings screen.

WeFax Settings



The WeFax Settings window allows you to change the length and width of the received picture. This dictates the file size of the finished bitmap when you save your picture. The larger the selection on this screen, the larger your saved file will be.

Option Settings



The Options window allows you to change optional settings for WeFAX for Windows.

Wrap - Allows a WeFAX to wrap back to the top of the picture when a incoming picture reaches the max lines you set in the WeFAX settings. If not checked, WeFAX for Windows stops displaying the picture when max lines is reached.

Lines Per Minute - Allows you to adjust the lines per minute to receive different types of images.

Default Directory - Allows users to set the default directory that WeFAX for Windows will choose when manually saving a WeFAX.

Direction - Allows you to choose the direction the WeFAX comes in (i.e. from right to left or from left to right).

Aspect – Controls the number of lines the TNC displays out of each 6 lines received.

- For receiving weather charts choose 576 (receives 2 out of every 6)
- For receiving Wire Photos choose 352 (receives 3 out of every 6)
- For receiving WeFAX Satellite choose 288 (receives 4 out of every 6)

Send

Send Command: After you have received a WeFax you can click on the **File** menu and then choose **Send** to send the picture as an attachment to an e-mail. This command will automatically use your default mail client (i.e. Internet Mail, Outlook, Outlook Express, Eudora, or Netscape Mail).

Exit

The **Exit** command closes WeFax for Windows. Use this command when you are finished with everything you wish to do. WeFax for Windows does not ask you if you want to save the open Bitmap at the time you quit.

If you have the **Return to Terminal Mode on Exit** menu option checked, WeFax for Windows will return your TNC to Terminal mode when you close the program.

Edit Menu

Edit Menu Options



The **Edit** menu contains the editing commands: Undo, Cut, Copy, and Paste.

Undo

Undo allows you to undo the last change you made. For instance if you pasted a sentence into the terminal window but you put it in the wrong place, instead of deleting it you could Undo it.

To Undo something, click on the **Edit** menu and then choose **Undo**.

Shortcuts

Key combination: <**Ctrl-Z**>


Cut

The **Cut** command will cut out a highlighted area and place it in the clipboard so you can paste it later.

To cut a selected area of highlighted text, click on the **Edit** menu and then choose **Cut**.

Shortcuts

Key combination: <**Ctrl-X**>

Toolbar button: 


Copy

The **Copy** command will copy a highlighted area and place it in the clipboard so you can Paste it later.

To copy a selected area of highlighted text, click on the **Edit** menu and then choose **Copy**.

Shortcuts:

Key combination: <**Ctrl-C**>

Toolbar button: 


Paste

The **Paste** command will place the contents of the clipboard into the Terminal window of WeFax for Windows wherever the cursor is flashing.

To paste to the Terminal window, click on the **Edit** menu and then choose **Paste**.

Shortcuts

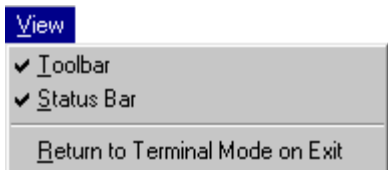
Key combination: <**Ctrl-X**>

Toolbar button: 

View Menu

View Menu Options

The **View** menu allows you to select whether you want the Toolbar and Status Bar enabled. It also allows you to set your TNC to Terminal Mode when you close WeFax for Windows.





Toolbar


In the **View** menu at the top of the WeFax window you can click on the **Toolbar** selection to remove the Toolbar from the screen. To add it back later, just click on the **View** menu again and select **Toolbar** again so that a check mark appears beside **Toolbar**.





This is the WeFAX for Windows Toolbar. This selection of buttons puts the majority of WeFAX for Windows menu options at your fingertips. When moving your mouse pointer over each button in the program the name of each one appears.


 The **New** button prepares to receive a new WeFAX picture. NOTE: As of this Preview, when you click on the New button the program will not ask you to save your existing picture. This will be changed in future releases.


 The **Open** button opens an existing bitmap. NOTE: This command opens the bitmap in Microsoft Paint, which comes standard with Windows.


 The **Save** button allows you to save a WeFAX picture to your computer.


 The **Cut** button cuts out any highlighted text and places it in the Windows clipboard.

 The **Copy** button makes a duplicate copy of the highlighted text and places the copy on the clipboard.


 **Paste** allows you to place any text that is in the clipboard on to a selected area on the Terminal window.


 The **WeFAX** button puts the TNC in WeFAX Mode. If the transmitting station sends out a 'sync pulse' at the beginning of the transmission then WeFAX for Windows will automatically begin receiving the incoming transmission. If the transmitting station does not emit a 'sync pulse' then you will have to manually start receiving the transmission by pressing the Lock button below.


 The **Lock** button is used to manually start receiving a WeFAX once you are in WeFAX mode. Make sure that your radio is tuned to the proper station before you begin receiving the image or you will only be receiving noise.


 The **Pause** button pauses the WeFAX picture. The picture continues to be processed in the background, but the picture stops coming onto the screen. Because the program continues to process the signal from the radio, when you resume WeFAX, the picture will automatically be updated with the picture that was received while the program was paused. This can be a problem though if you hold the WeFAX paused too long. Because the TNCs only have a finite buffer in which to hold data, if you keep the WeFAX paused too long then you may lose some of the data

when you resume it. The pause function is useful before you save or print an incoming bitmap. When a picture is finished, pause the transmission and save or print your bitmap. If you fail to do this then the repeated fax may overwrite the completed picture. Click the **Pause** again to resume WeFAX.

 This button moves the sync line to the left 10 Pixels.

 This button moves the sync line to the left 1 pixel.

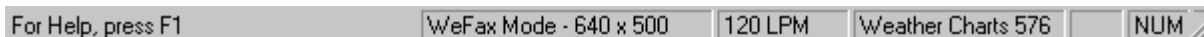
 This button moves the sync line to the right 1 pixel.

 This button moves the sync line to the right 10 pixels.

*The sync line represents the left side of the WeFAX. The ability to move this line left or right allows you to center the picture on different places on the incoming transmission.

Status Bar

In the **View** menu at the top of the WeFAX window you can click on the **Status Bar** selection to remove the Status Bar from the window. To add it back later, just click on the **View** menu again and reselect **Status Bar** to put a check mark besides **Status Bar**.



On the left part of the Status Bar, it will tell you what you have your mouse pointer over. For instance, if you had it over the Cut Button on the toolbar, it would tell you that it was the cut command. The Status Bar also let's you know the time and whether you have the Num Lock, Caps Lock or Scroll Lock on. The Status Bar also tells you what mode you're in (i.e. Host or WeFAX Mode) and the Dimensions in WeFAX mode. The status bar will also show what Aspect was chosen (i.e. Wire Photo, WeFAX Satellite, or Weather Chart). The last thing you will see will be a clock, which is in local time and UTC time to help in the scheduling of faxes.

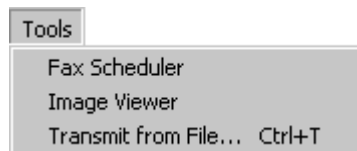
Return to Terminal Mode on Exit

Putting a check beside this option causes WeFAX for Windows to put your TNC in Terminal Mode

when you exit the program. If it is not checked, the TNC remains in Host Mode.

Tools Menu

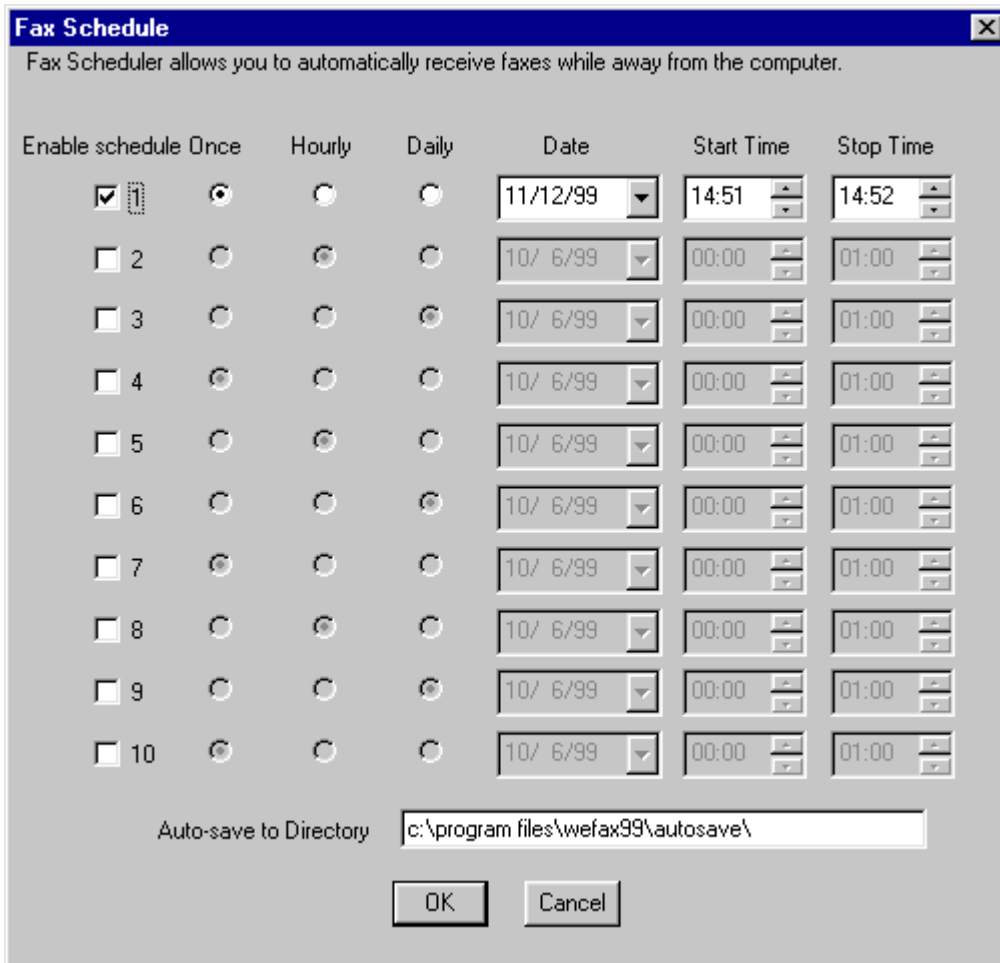
Tools Menu Options



The Tools menu allows you to access the Fax Scheduler, the Image Viewer, and the Fax Transmit window.

Fax Scheduler

The Fax Scheduler command allows you to set a predetermined schedule to download Weather Faxes. Selecting this option should bring up a window that looks similar to the one below.



You can set up to 10 schedules at a time for WeFax for Windows to remember. In order for the scheduler to work you must keep WeFax for Windows running. With the Scheduler you just set the time that a transmission is set to commence and WeFax for Windows will automatically switch to WeFax mode when that time arrives and switch off at the time you specified to stop.

Next to each schedule is a box. Just click in the box to activate that schedule. Once active you may choose if you want to automatically receive a WeFax Once, Hourly, or Daily. If you choose 'Once' then the Scheduler will only receive the WeFax one time only and then stop. If you choose 'Hourly' then it will automatically start and stop on the Date and Time that you have set and will reset itself to the next Hour from the start time. So after the transmission is received it will increment both the start and stop times by one hour. If you choose 'Daily' then the Start and Stop time will begin as you set and when it is finished it will increment the Day by one.

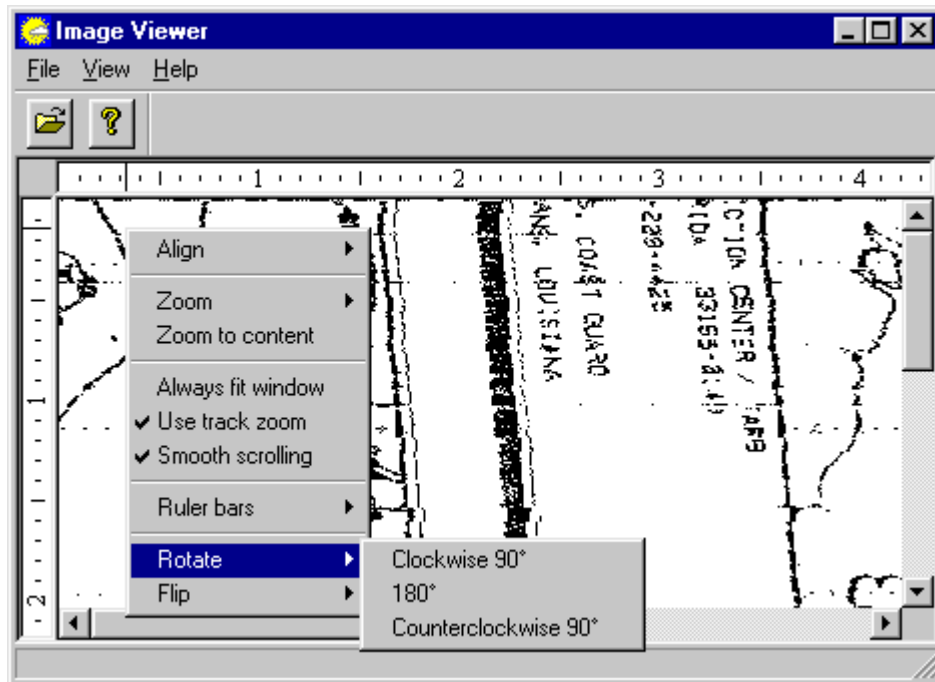
AutoSave Default Directory – This allows you to set the directory that the Fax Scheduler saves the received weather Facsimiles into when the stop time has been reached. The file name that the

received WeFAX is saved as is made up of the Month, day, hour and minute of the start time. For example if you started a reception on December 1st, 1999 at 12:45 UTC then the filename would be 12m1d12h45.bmp

NOTE: IF YOU USE THE SCHEDULER THEN YOU WILL WANT TO UNCHECK THE 'WRAP TO TOP' OPTION IN THE OPTIONS SETTINGS WINDOW. THIS WILL PREVENT THE PROGRAM FROM COPYING OVER THE RECEIVED TRANSMISSION IF YOU SET THE STOP TIME FOR LONGER THAN IT TAKES TO RECEIVE THE TRANSMISSION.

Image Viewer

The Image Viewer allows you to view a received WeFAX in an environment where you can Zoom, Rotate, Flip and otherwise manipulate the picture. If you have already received a WeFAX received in WeFAX for Windows and it is on your screen then simply click on **Tools** and then choose **Image Viewer** and it will open the current picture in Image viewer. If you have already saved the Image and simply want to view it again then open up image viewer the same way as above. You should see the following screen.



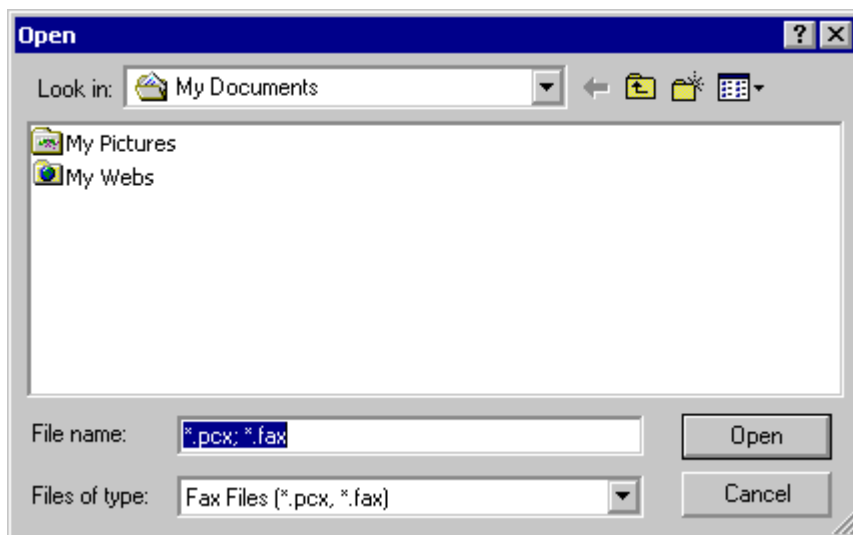
Simply click on **File**, select **Open**, and choose the bitmap you want to view.

All commands in the Image Viewer are accessed through the right mouse click menu (see the picture above for an example). From the right-click menu you can zoom in and out of the Bitmap, Rotate is 90 degrees or 180 degrees both clockwise and counter-clockwise. You can also flip the image along its vertical and horizontal axis. You can change the alignment so it is shown on the left, center, or right side of the window.

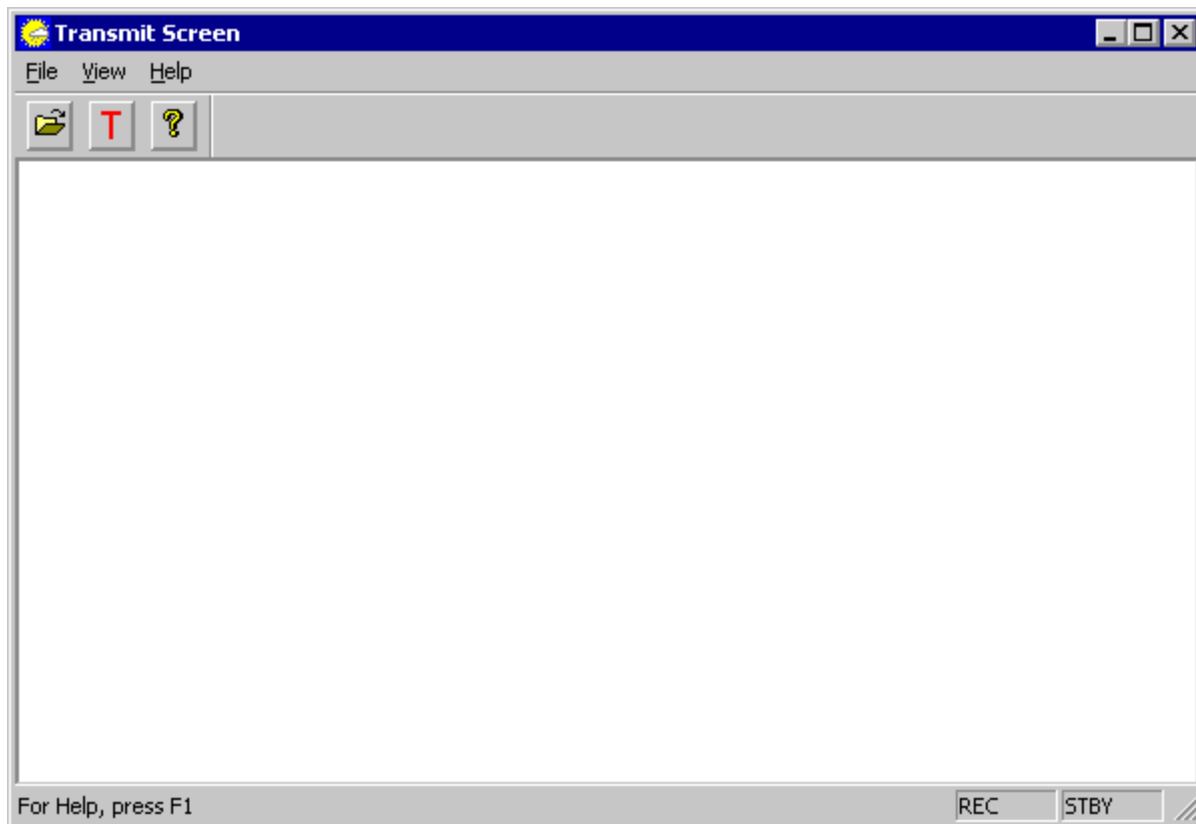
WARNING: IF YOU HAVE A CHECK NEXT TO 'FIT TO SCREEN', THEN YOU WILL NOT BE ABLE TO ZOOM IN OR ZOOM OUT. SIMPLY UNCHECK THE BOX TO BE ABLE TO ZOOM AGAIN.

Transmit from File

The **Transmit from File** menu option allows you to transmit a fax from a previously saved file. Selecting this option brings up a window where you can select the file you want to transmit.



Once you have selected a file to transmit by highlighting the file, click the **Open** button. This will bring up the WeFax Transmit Screen.

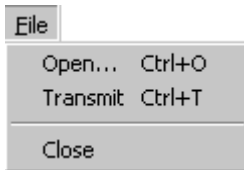


Commands for transmitting Fax files can be accessed through the File menu, View menu, Help menu, and Transmit Toolbar. The Toolbar appears right below the Menu bar where File, View, and Help appear. The Status Bar at the bottom of the Transmit Screen, tells you the current status of your Fax transmission on the right end of the Status Bar.



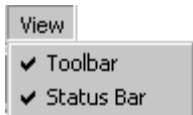
Transmit Screen File Menu

The **File** menu on the Transmit Screen allows you to **Open** a file, **Transmit** an open file, and **Close** the current file.



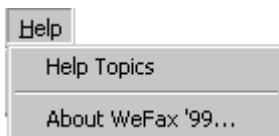
Transmit Screen View Menu

The **View** menu allows you to select whether to enable the Toolbar or the Status Bar on the Transmit Window. A check mark beside the option means the option is enabled and will appear on the Window. Click on the option with your mouse to add or to remove the check mark.



Transmit Screen Help Menu


The **Help** menu gives you access to WeFax for Windows help through the **Help Topics** option. Selecting **the About WeFax** option brings up a box that tells you the version of WeFax for Windows you are running, your TNC, and the version of firmware in your TNC.




Transmit Toolbar

The Transmit Toolbar appears below the Menu Bar and contains buttons for easy access to frequently used commands.



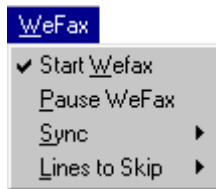
 Command to **Open** a file for Fax transmission.

 Command to **Transmit** the currently opened Fax file.

 Command to bring up the **About WeFax** information box.



WeFax Menu

WeFax Menu Options




The **WeFax** menu gives you options to Start WeFax, Pause WeFax, Sync a Wefax transmission, or set the number of lines to skip.

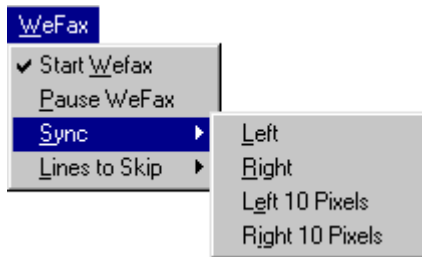
Start WeFax

The WeFax button  puts the TNC in WeFax Mode. If the transmitting station sends out a 'sync pulse' at the beginning of the transmission then WeFax for Windows will automatically begin receiving the incoming transmission. If the transmitting station does not emit a 'sync pulse' then you will have to manually start receiving the transmission by pressing the Lock button .

Pause WeFax

The Pause button  pauses the incoming WeFax. Remember though that this only pauses the display. The signal will still be transmitting at the originating station. While it is paused the picture continues to be processed in the background, but the picture stops coming onto the screen. Because the program continues to process the signal from the radio, when you resume WeFax, the picture will automatically be updated with the picture that was received while the program was paused. This can be a problem though if you hold the WeFax paused too long. Because the TNCs only have a finite buffer in which to hold data, if you keep the WeFax paused too long then you may lose some of the data when you resume it. The Pause function is useful before you save or print an incoming bitmap. When a picture is finished, pause the transmission and save or print your bitmap. If you fail to do this then the repeated fax may overwrite the completed picture.

Sync



Sync Left - This command moves the Sync line to the left one (1) pixel

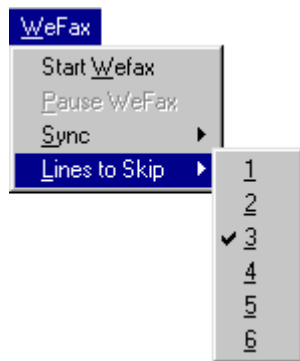
Sync Right - This command moves the Sync line to the right one (1) pixel

Sync left 10 Pixels - This command moves the Sync line to the left Ten (10) pixels

Sync Right 10 Pixels - This command moves the Sync line to the right Ten (10) pixels

*The sync line represents the left side of the WeFax. The ability to move this line left or right allows you to center the picture on different places on the incoming transmission.

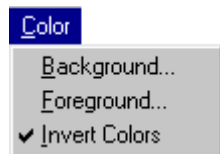
Lines to Skip



The **Lines to Skip** option increases or decreases the resolution of the picture. Increasing the number of Lines to Skip decreases the resolution. Decreasing the number of Lines to Skip increases the resolution.

Color Menu

Color Menu Options



The **Color** menu allows you to set the Background color, Foreground color, or Invert the current colors.

Background Color

This allows you to select the Background Color for your bitmap. The following screen will appear. Simply choose you color and click **OK**.



Foreground Color

This allows you to select the foreground color for your bitmap. The following screen will appear. Simply choose you color and click **OK**.

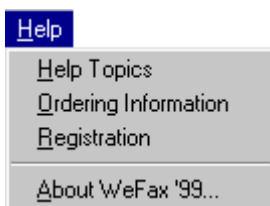


Invert Colors

This command allows you to invert your Background and Foreground colors. For instance if your background color was white and the foreground was black then by inverting the colors, the background would be black and the foreground would be white. A check mark beside this menu option indicates that Invert Colors is enabled.

Help Menu

Help Menu Options



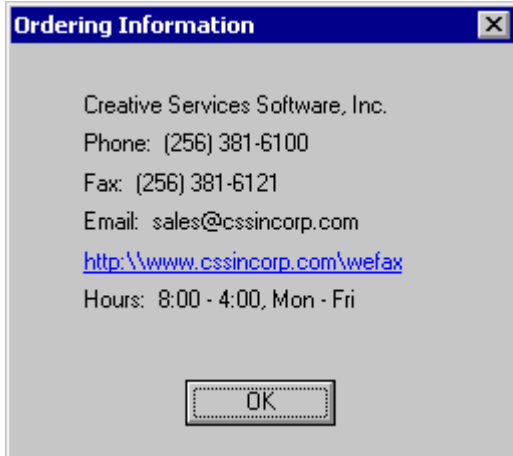
The **Help** menu gives you access to WeFax for Windows help, information on where to purchase WeFax for Windows, the Registration screen, and the About screen where you will find version and registration information.

Help Topics

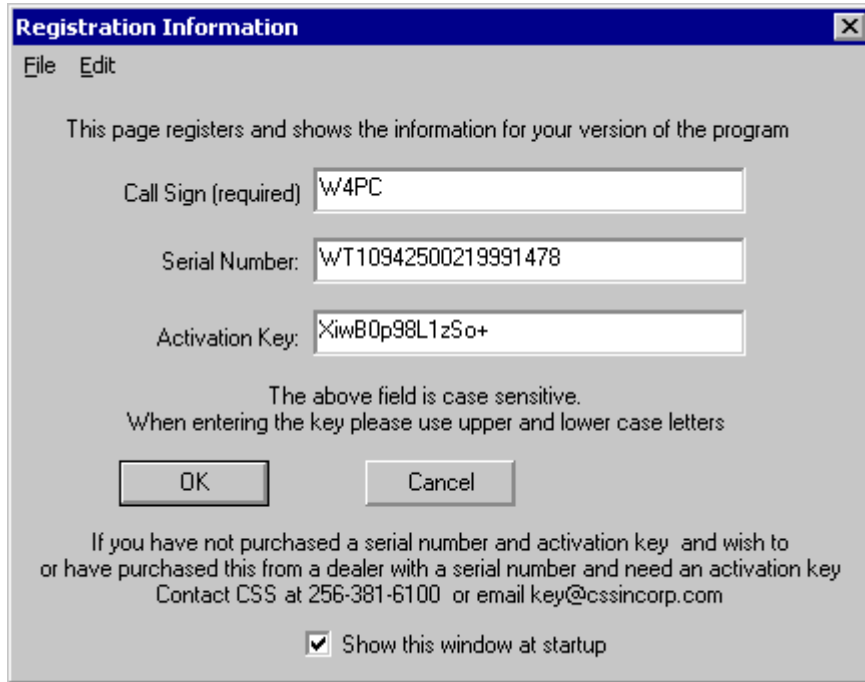
This command brings up this help file.

Ordering Information

This screen gives contact information to order and register WeFax for Windows.



Registration



This allows you to register your copy of WeFAX for Windows. By registering your copy, you gain access to features not available in Demo Mode. For more on Demo Mode, see the Demo Mode topic.

About WeFAX for Windows

The About screen gives you information about the version of WeFAX for Windows you are running, your TNC, and the version of firmware in your TNC.



Index

A

About WeFax '99 33
Aspect 15

B

Background Color 29
Baud Rate 13, 14

C

Color Menu 29
Com Port 13
Communication Settings 13
Copy 17, 19
Cut 17, 18

D

Default Directory 15
Demo Mode 6, 33
Direction 15

E

Edit Menu 16
Exit 16

F

Fax Scheduler 21
File Menu 11
Flip 23, 24
ForeGround Color 30

H

Help Menu 31
Help Topics 32

I

Image Viewer 23, 24
Installation of WeFax'99 2
Introduction to WeFax '99 2
Invert Colors 31

L

Lines Per Minute 15
Lines to Skip 28
Lock 19
Lock button 27

N

New 11, 19

O

Open 12, 18

Ordering Information 32

P

Paste 18

Pause 18, 28

Pause Wefax 27

Print 12, 20

R

Radio 8

receiving 15

 Weather Charts 15

 WeFax Satellite 15

Registration 7, 32

Return to Terminal Mode on Exit 16, 20

Rotate 23, 24

S

Save 12, 19, 20

Scheduler 21, 22, 23

Send 16

Set Schedule 21

Settings 13, 14, 15

Skip 29

Start Wefax 27

Starting WeFax '99 3

Status Bar 20

Support 10

Sync 20, 28

T

TBAud 13

Tech Support 9

Terminal Mode on Exit 16, 20

The WeFax Window 5

Toolbar 18, 19

Tools Menu 21

Transmit File Menu 25

Transmit from File 24

Transmit Help Menu 26

Transmit Toolbar 26

Transmit View Menu 26

Tuning the Radio 8

U

Undo 17

V

View Menu 18

W

WeFax 8

WeFax Menu 27

WeFax Mode 19, 27

Wefax Settings 14

Welcome 2

What is a Wefax 8

Z

Zoom 23, 24